

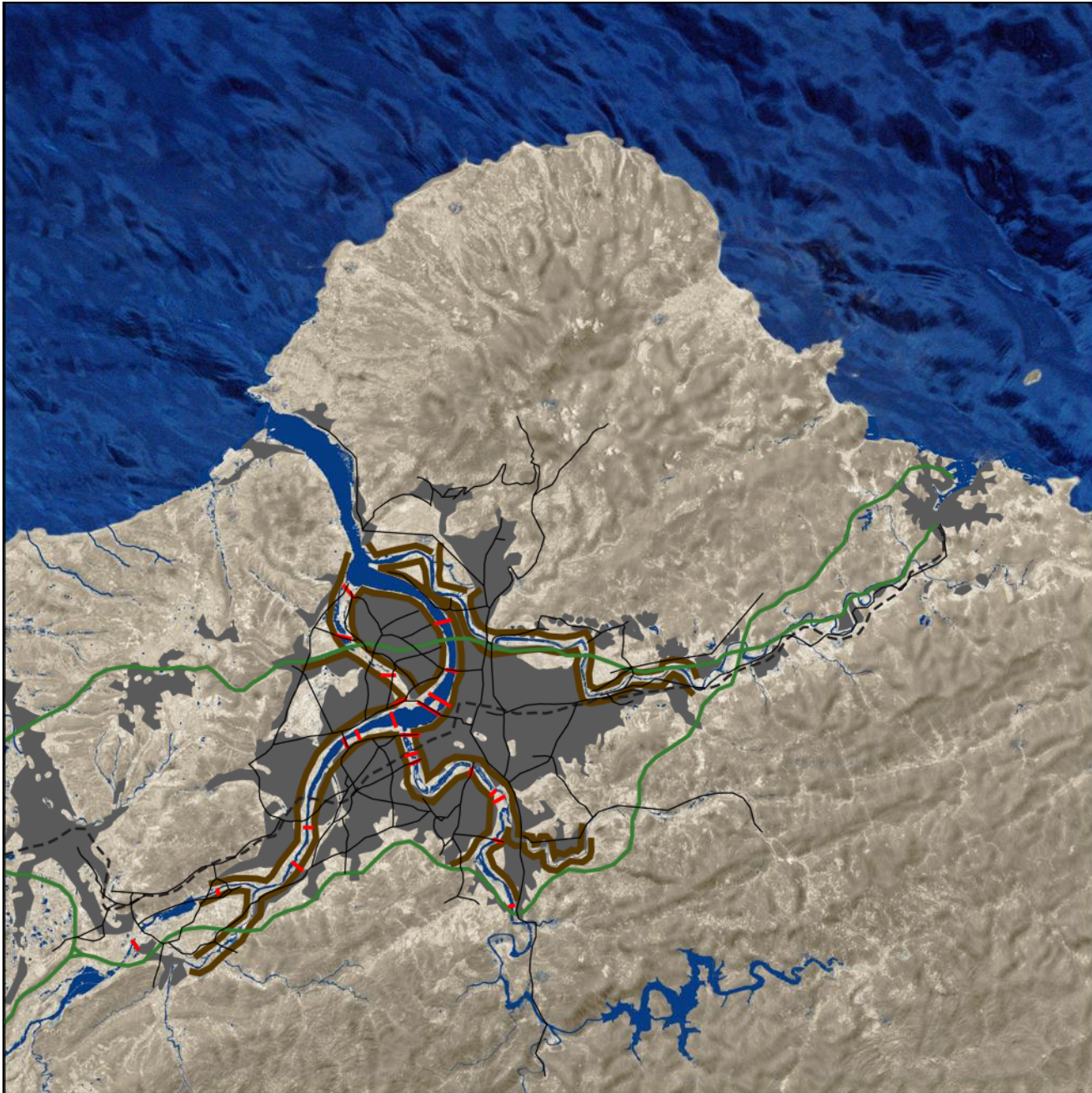
KAUPUNKIAKUPUNKTIO

MAISEMA-ARKKITEHTIPÄIVÄT 12.10.2012

Marco Casagrande, ark / Aalto SGT Sustainable Global Technologies

www.clab.fi

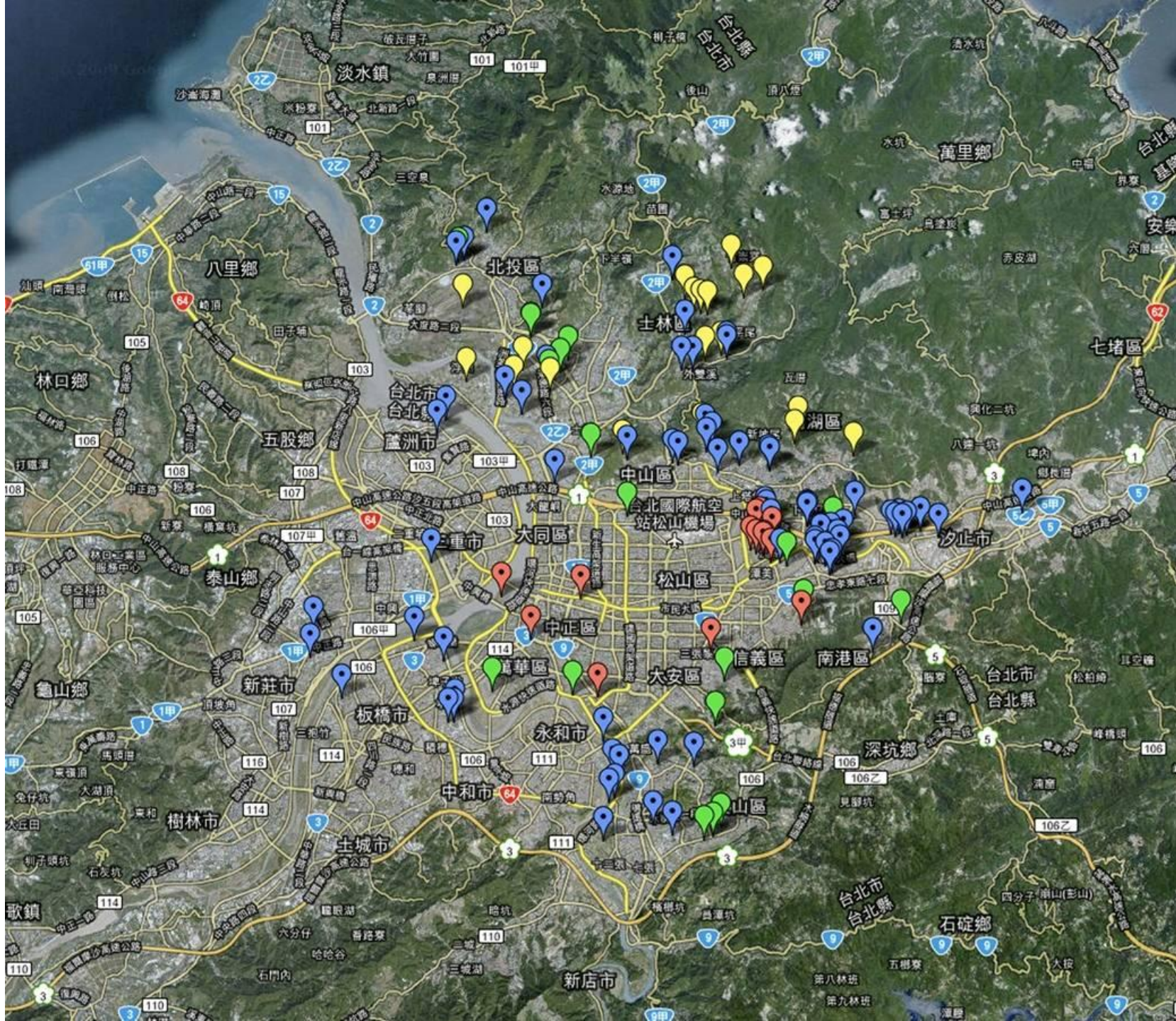
TAIPEI













CASE : GUANDU RIVER CITY





淡

水

334.8 ha

基地範圍

189.0 ha

基 隆

河

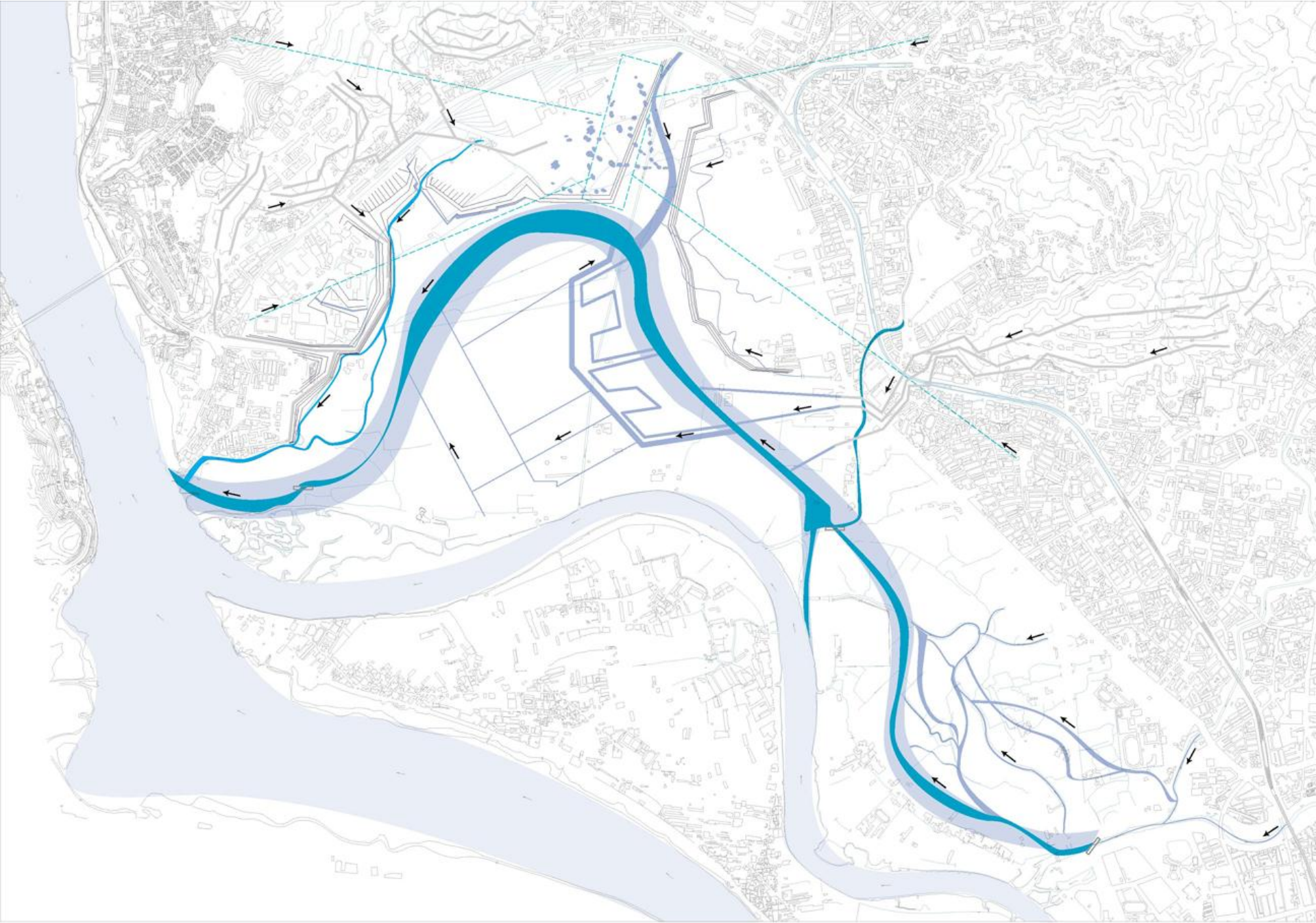
197.3 ha

河

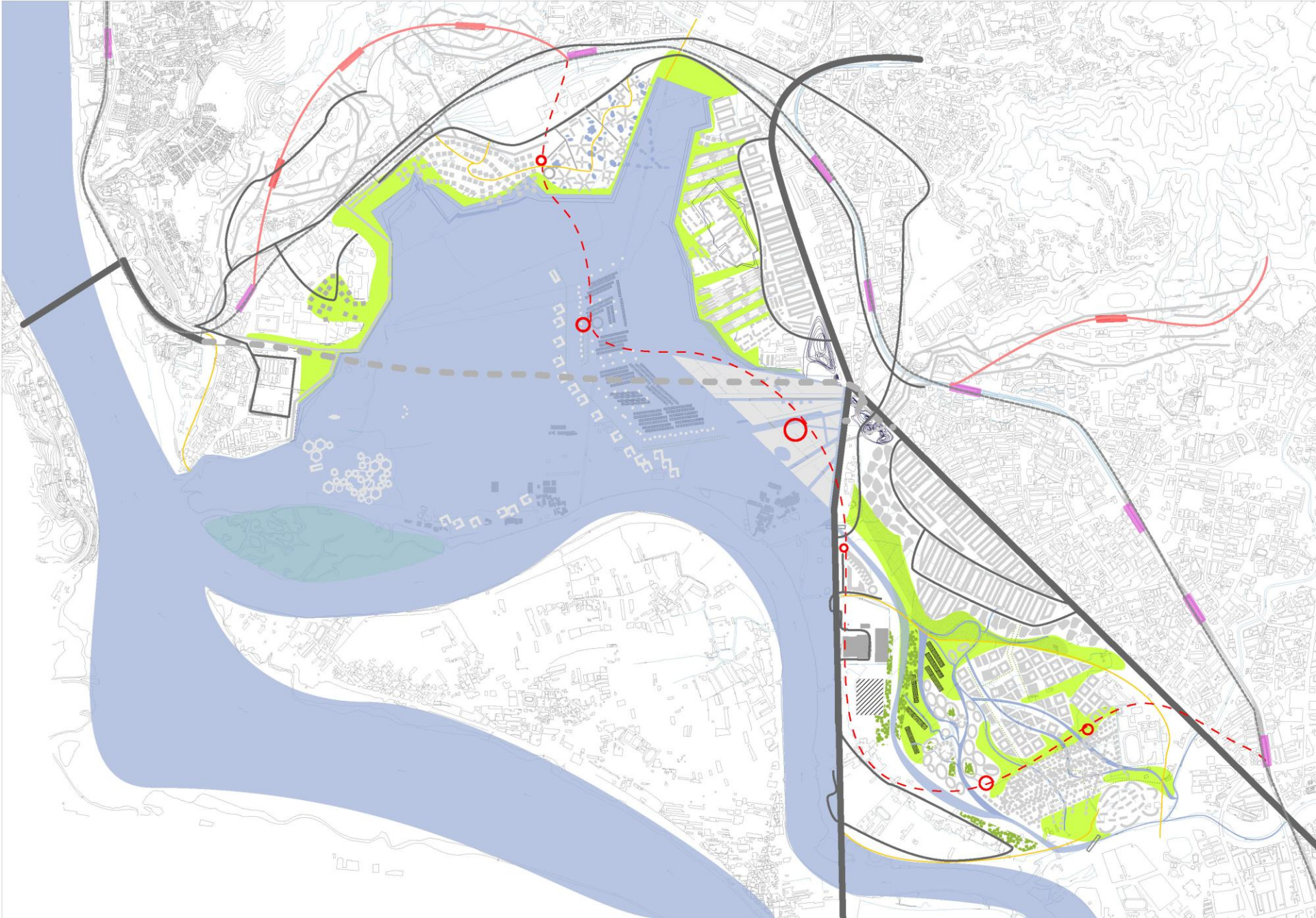




RIVER CITY GUANDU

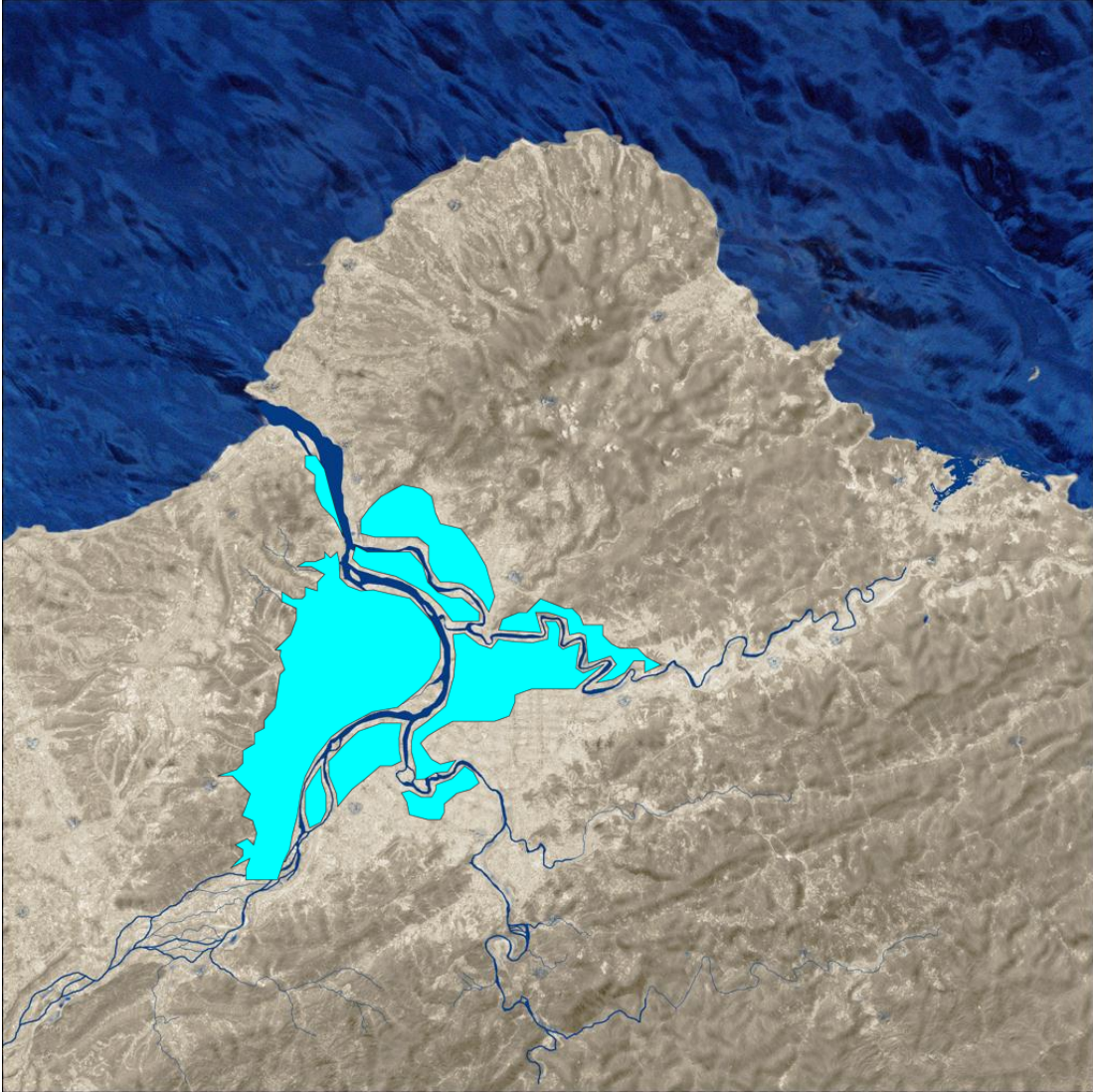


GUANDU RIVER

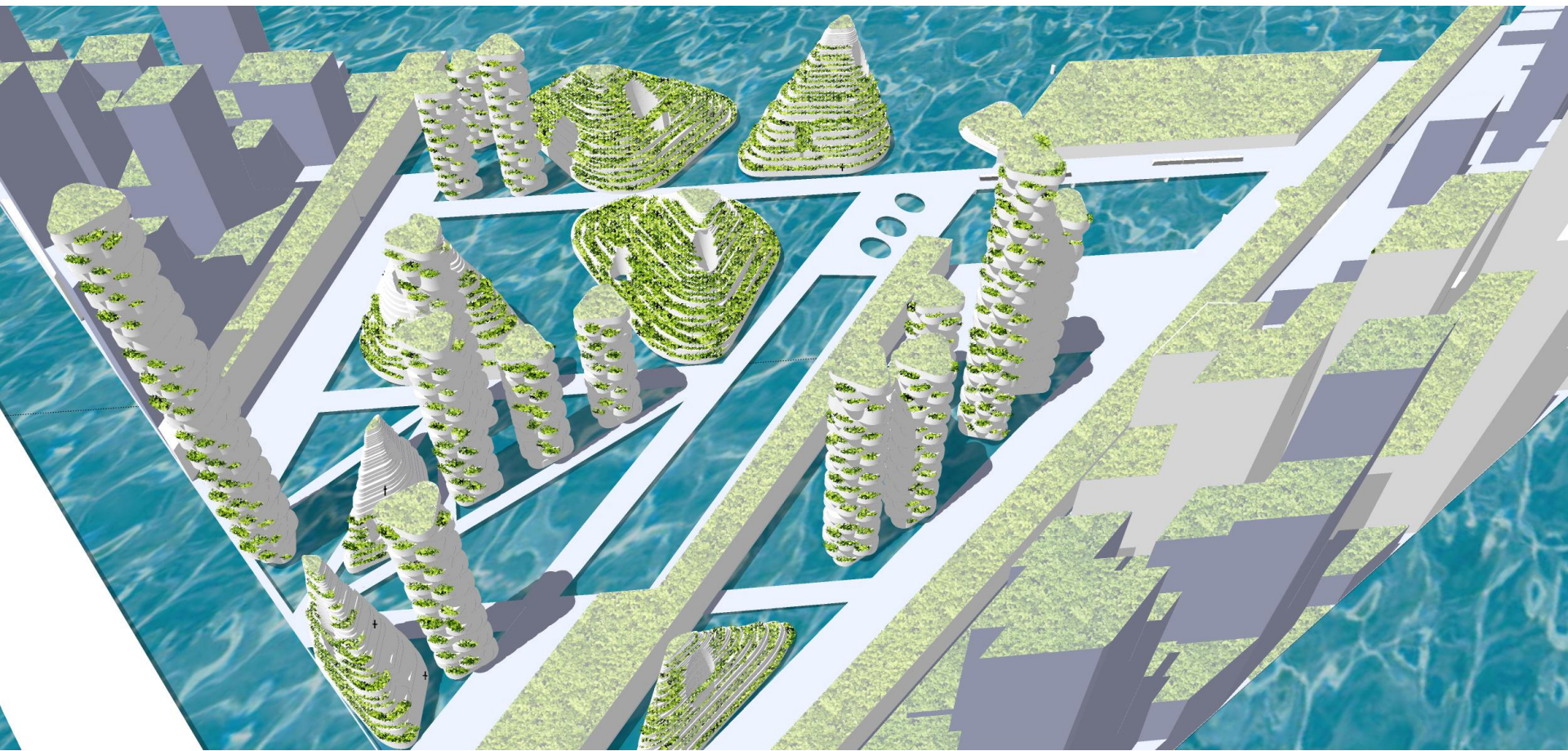


HIGH WATER SCENARIO

FREE FLOODING



1963
Depth: 3.0 m
Total: 109.3 km²





ORGANIC LAYERS













MISSIS CHEN







MULTIDISCIPLINARY PLANNING



TAIPEI CITY WALL





LOCAL KNOWLEDGE



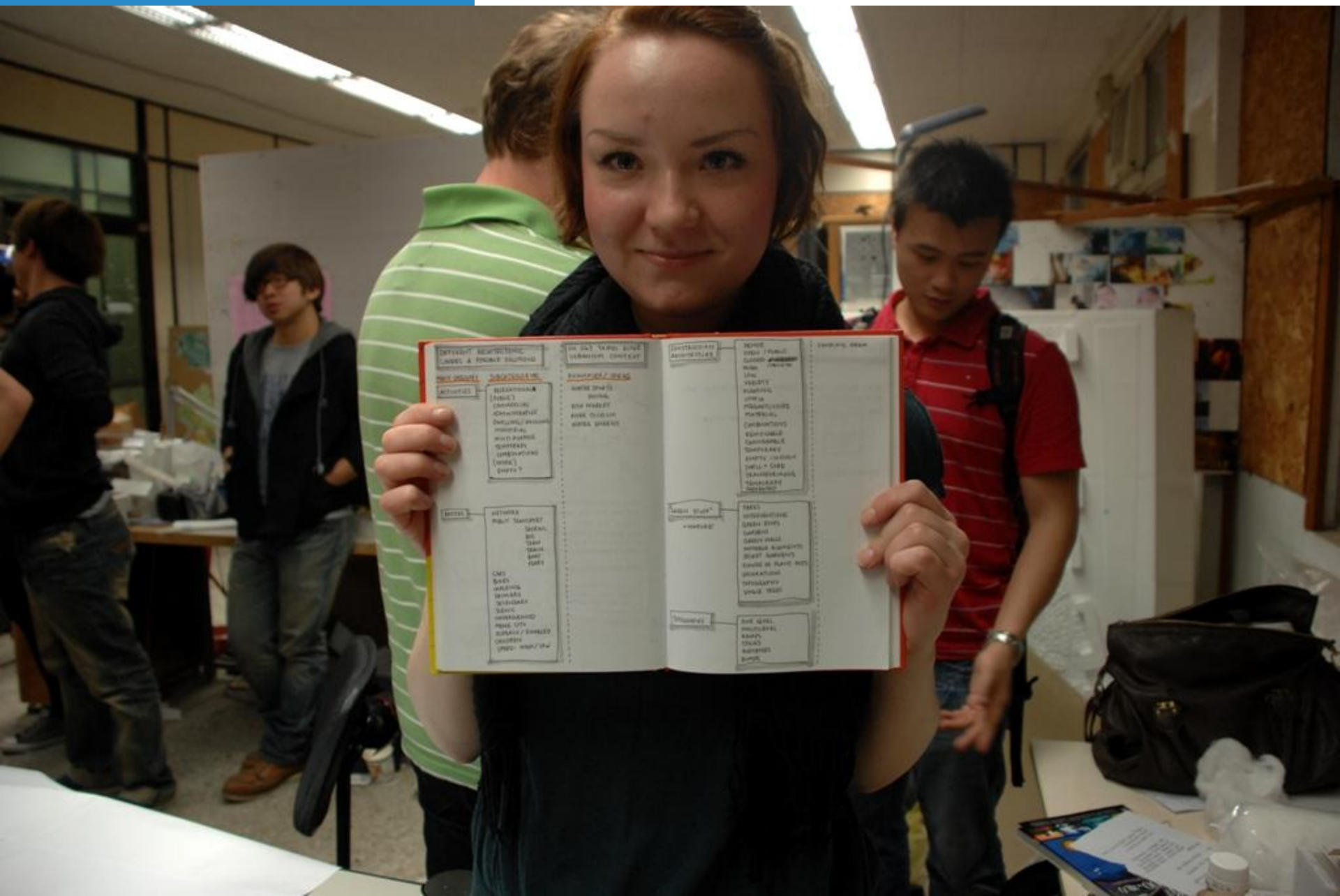




Aalto University
+ Tamkang University

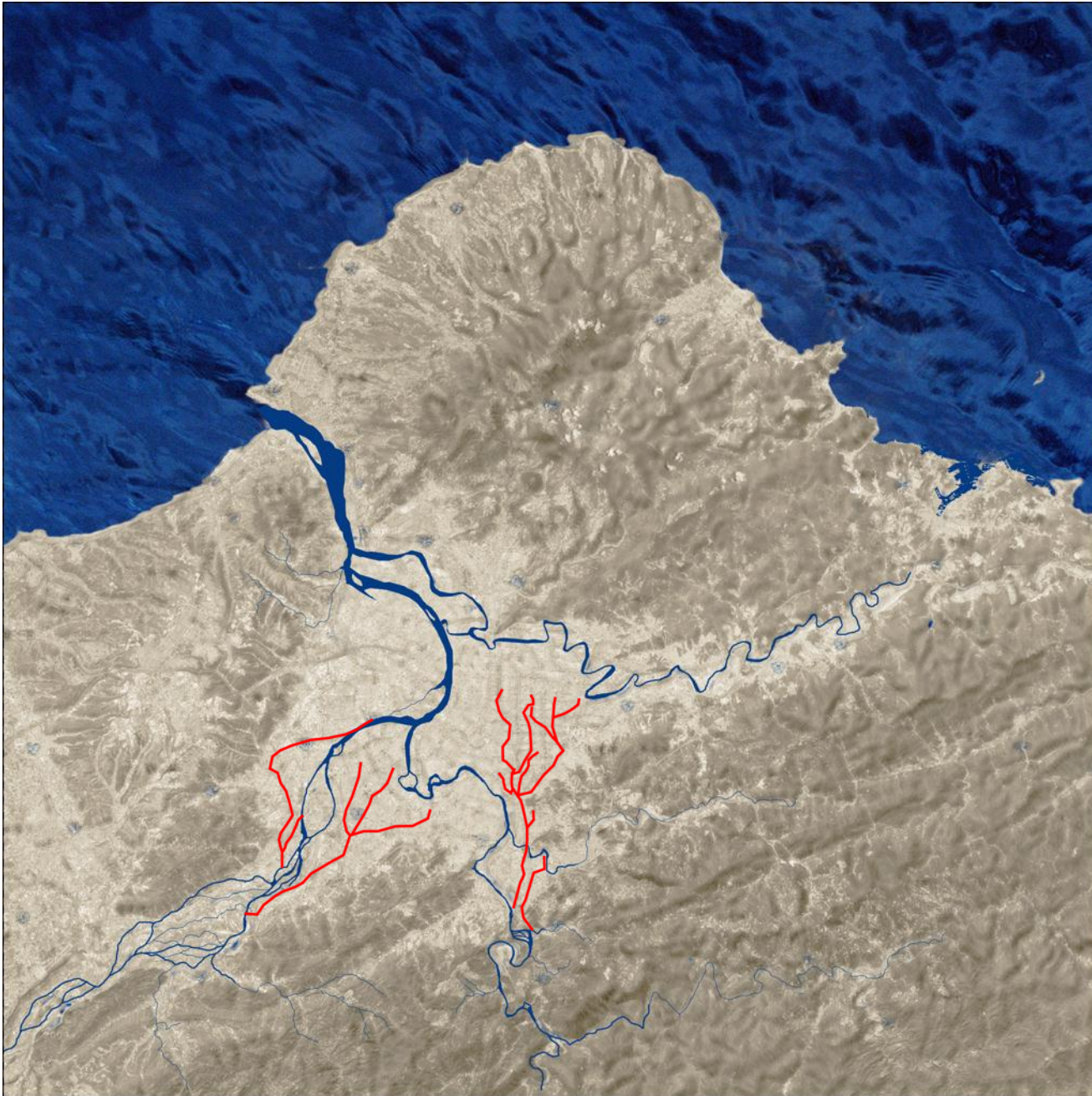
Taipei River Urbanism Workshop

Ruin Academy
Prof. Macro Casagrande



DIFFERENT ARCHITECTURAL LEVELS & PHASES	IN USE / UNDER CONSTRUCTION	UNDEVELOPED	REUSE	CONSTRUCTION
PHASES	ACTIVITIES	FUNCTIONS	ACTIVITIES	FUNCTIONS
<ul style="list-style-type: none"> RESIDENTIAL OFFICE RETAIL INDUSTRIAL EDUCATION RECREATION TRANSPORT WORK OTHER 	<ul style="list-style-type: none"> RESIDENTIAL OFFICE RETAIL INDUSTRIAL EDUCATION RECREATION TRANSPORT WORK OTHER 	<ul style="list-style-type: none"> RESIDENTIAL OFFICE RETAIL INDUSTRIAL EDUCATION RECREATION TRANSPORT WORK OTHER 	<ul style="list-style-type: none"> RESIDENTIAL OFFICE RETAIL INDUSTRIAL EDUCATION RECREATION TRANSPORT WORK OTHER 	<ul style="list-style-type: none"> RESIDENTIAL OFFICE RETAIL INDUSTRIAL EDUCATION RECREATION TRANSPORT WORK OTHER

Leokong kanava

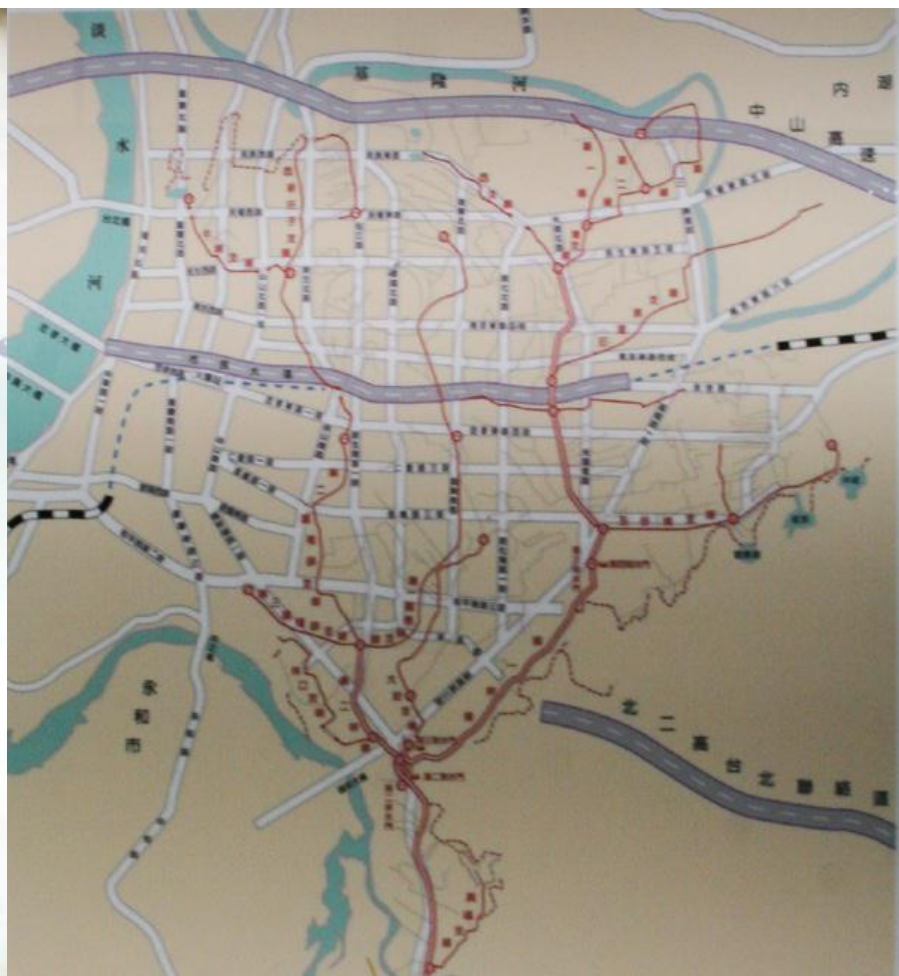




瑠公

瑠公像

瑠公圳又名金合川圳，郭錫瑠先生效大禹治水精神，將彰化家業全部變賣，悉數投入開發台北地區水利事業，憑藉其堅忍卓絕的恆心與毅力，經歷 22 載艱苦奮鬥，於清乾隆 27 年（西元 1762 年）完成了長達二十公里，貫穿台北盆地的水利灌溉大圳，後人為了感懷郭錫瑠先生恩德，尊稱為「瑠公」。將其所開鑿的大圳更名為「瑠公圳」表達對瑠公的追思和尊崇之意。





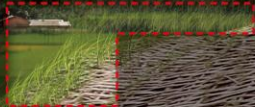
ECOLOGICAL CORRIDOR

NATURAL RIVER RESTORATION
SUSTAINABLE ECO-SYSTEM

TAIPEI CITY



URBAN FARMS



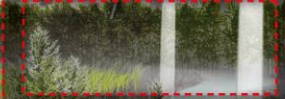
BAMBOO LOFT



WINDMILL
BIO ENERGY



WETLANDS / BIOLOGICAL FILTER
SEDIMENTATION POOL



UNDERGROUND RESERVOIRS
STORM WATER



BIOMASS PRODUCTION



WILD / WASTE

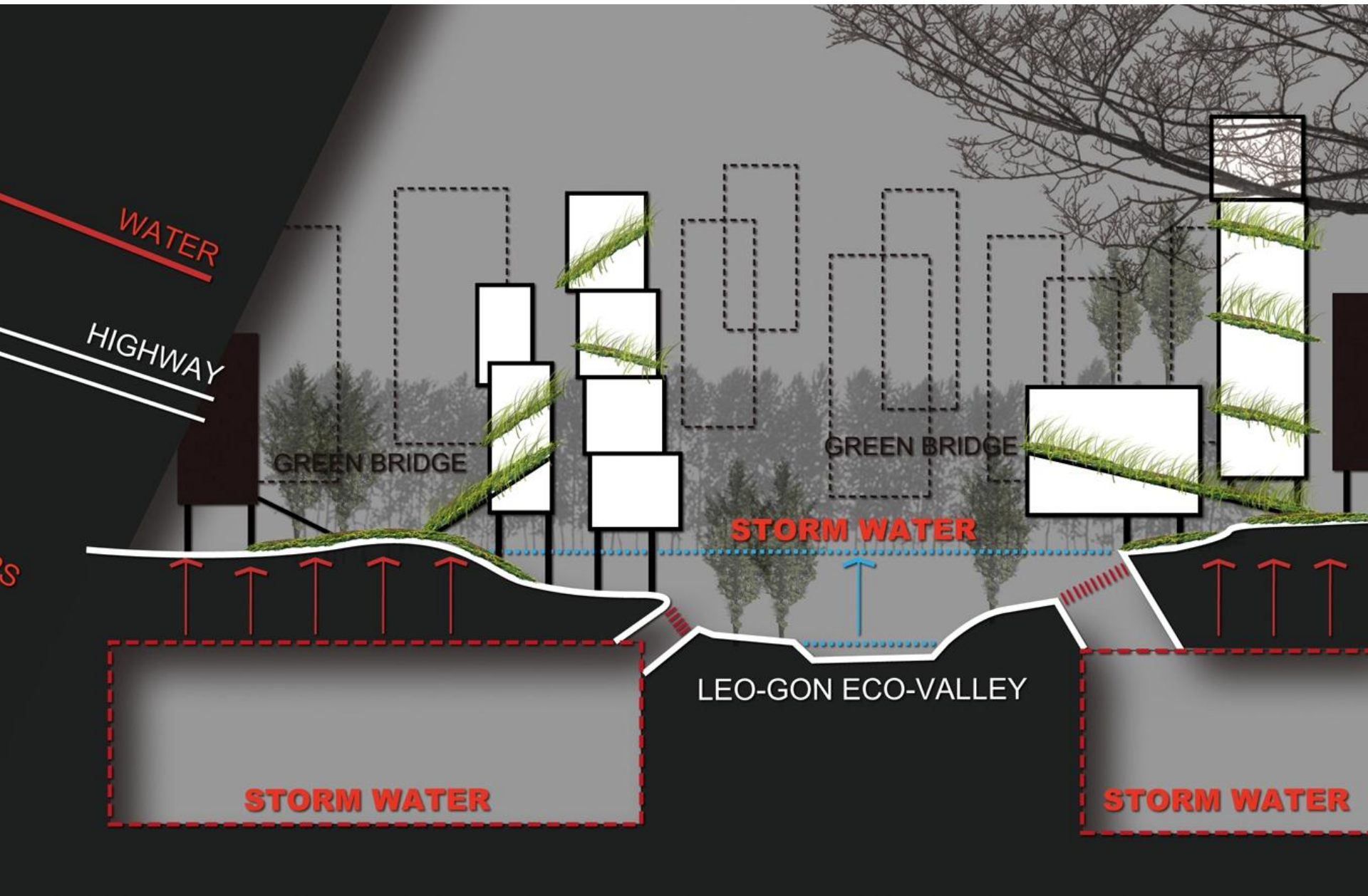
NATURAL RIVER RESTORATION SUSTAINABLE ECO-SYSTEM
1. URBAN FARMING
2. BIOMASS FOR BIOENERGY
3. RECREATION

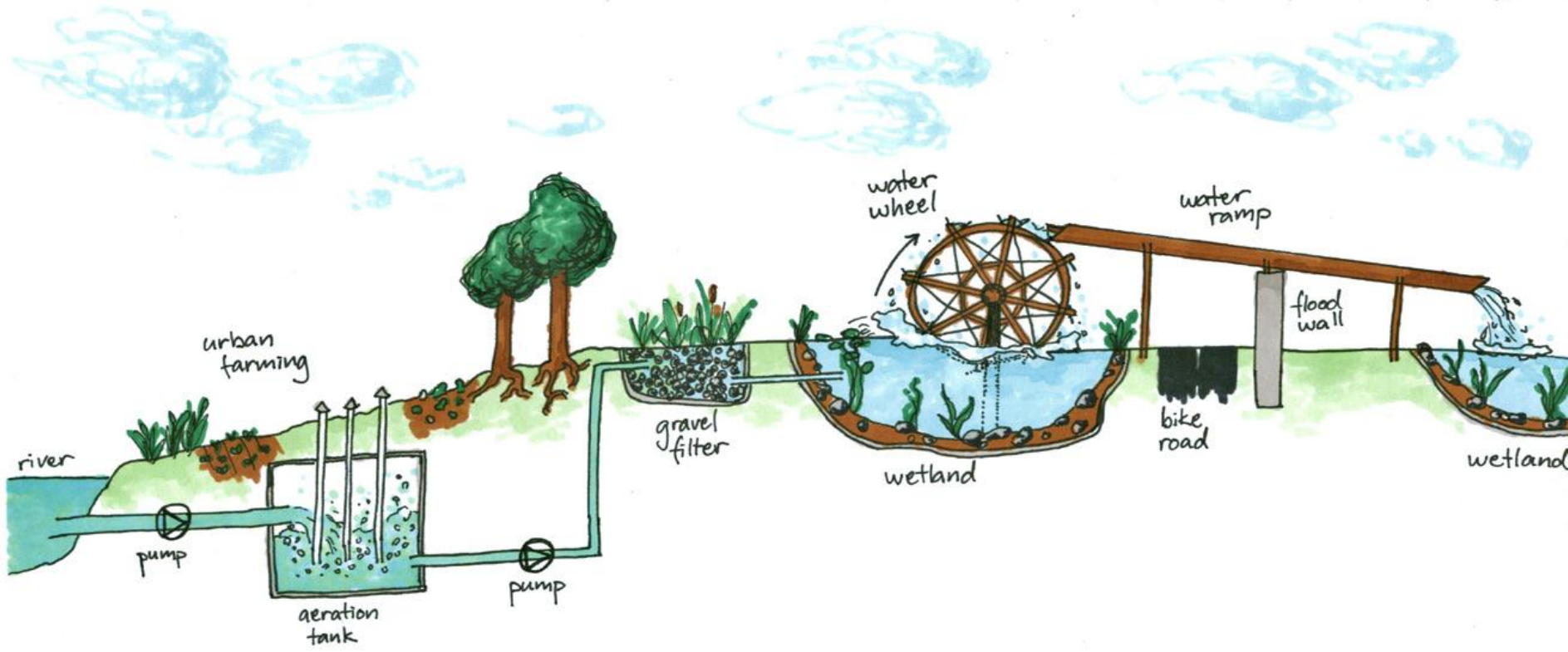
COMMUNITY GARDENS / URBAN FARMS

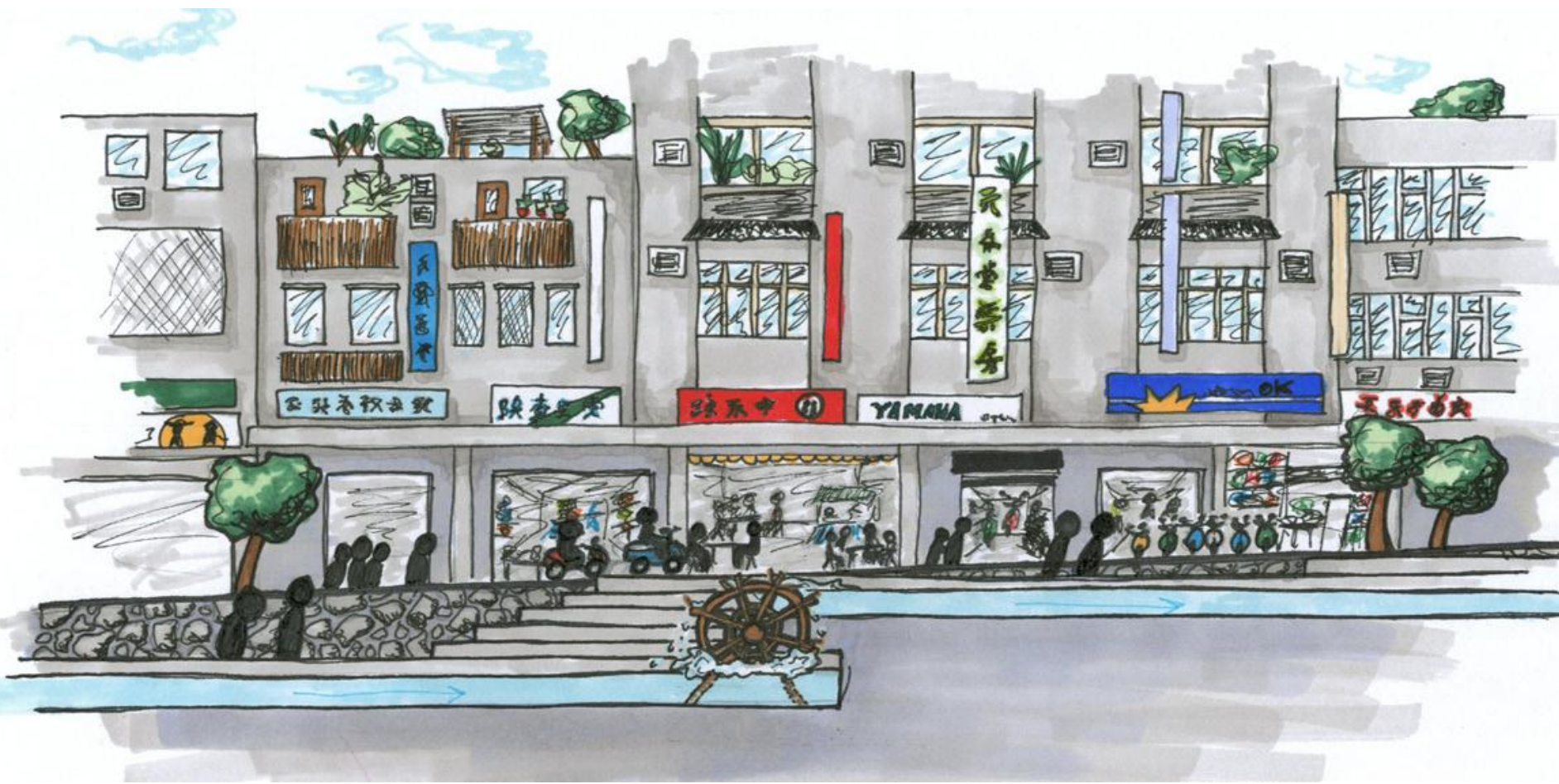
BEACH + AQUA CULTURE

AQUA CULTURE
DRINKING WATER PURIFICATION



















港興國際設計

ASIAN

洗餐具

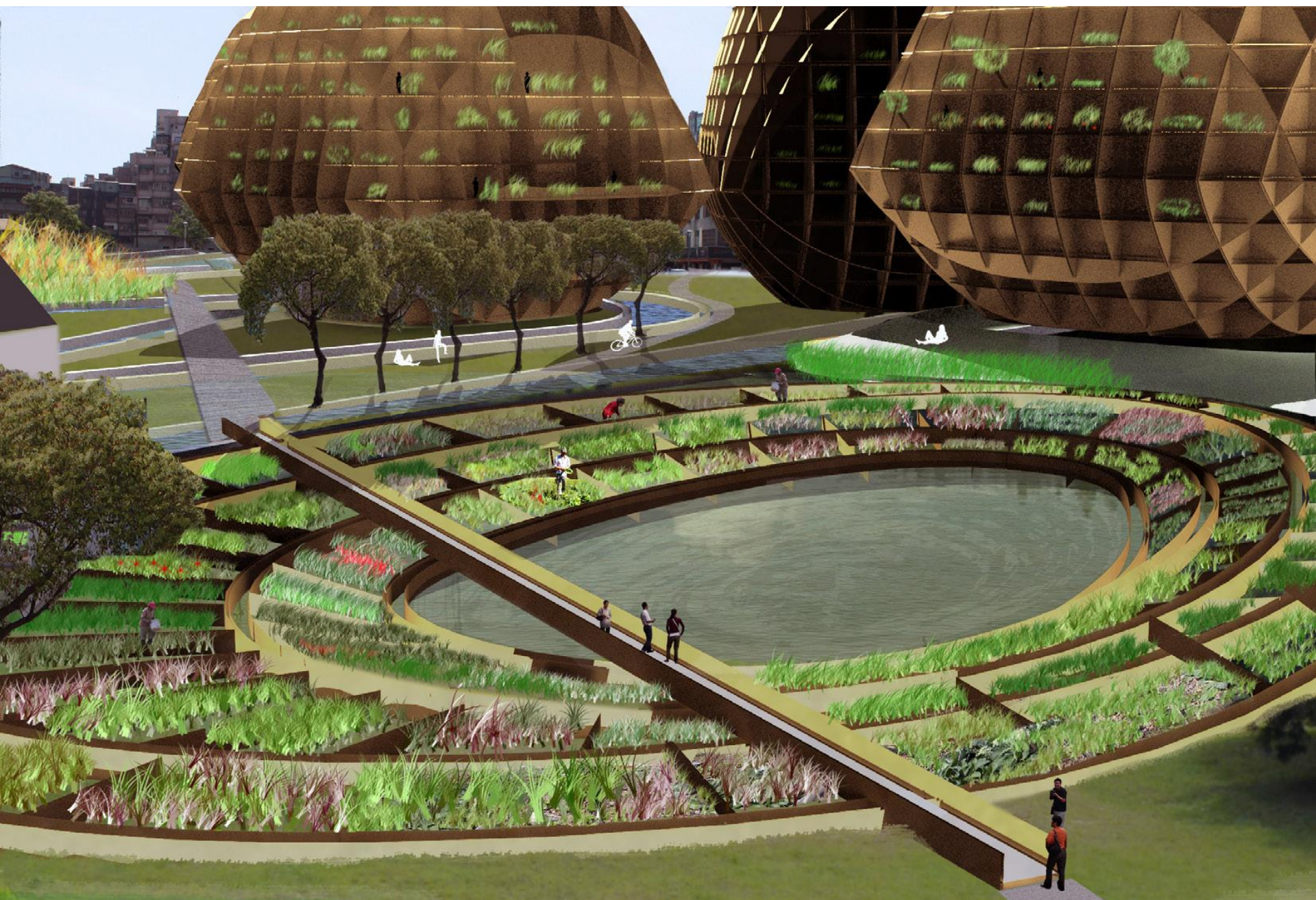
39

建和藥局

快速沖印攝影

ROBY ENGLISH

如苑





KIITOS

